



**FLOORPLAN OPTIONS**

We personalise our floorplans. Talk to us about our huge range of ready-to-go design options.

**Facades available:**

Barrine, Mackay	
Lonsdale, Corella	
<b>Overall home width</b>	<b>8.99m</b>
<b>Overall home length</b>	<b>21.71m</b>

Residence	219.1m <sup>2</sup>	23.6sq
Garage	37m <sup>2</sup>	4sq
Porch	4.8m <sup>2</sup>	0.5sq
Alfresco	14.8m <sup>2</sup>	1.6sq
<b>Total</b>	<b>275.7m<sup>2</sup></b>	<b>29.7sq</b>

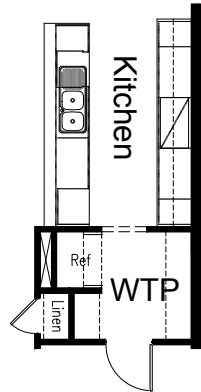
Listed details based on Barrine facade floorplan (illustrated)

\*Copyright conditions. All photos and illustrations are representative only. Floor plans and specifications may be varied by Burbank without notice, the dimensions are diagrammatic only and a Building Contract with final drawings will display correct dimensions and detail. All designs are the property of Burbank and must not be used, reproduced, copied or varied, wholly or in part without written permission from an authorised Burbank representative. Copyright Burbank Australia (NSW) Pty Ltd. ABN 88 610 822 770. NSW BL 295627C ACT BL 2016566.

**Call 13 BURBANK**  
**Visit [burbank.com.au](http://burbank.com.au)**

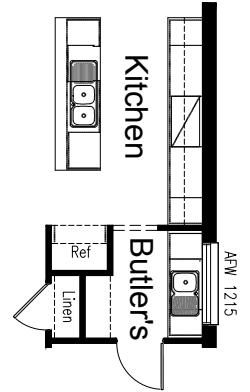
**OPTION K1**

Provide Galley-style Kitchen option including 900mm retractable rangehood, 900mm cooktop, 900mm under bench oven, 450mm drawer unit, dishwasher provision, microwave provision with pot drawer, 4No. 900mm base cupboards, 2No. 450mm base cupboards, 2No. 900mm overhead cupboards, 2No. 450mm overhead cupboards, open shelf over refrigerator space, additional bench top and tiled splashback to suit.



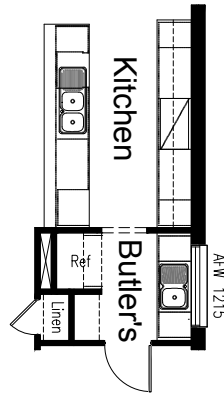
**OPTION K4**

Provide Butler's Pantry option including 900mm retractable rangehood, 900mm cooktop, 900mm under bench oven, 450mm drawer unit, dishwasher provision, microwave provision with pot drawer, 3No. 900mm base cupboards, 2No. 450mm base cupboards, 2No. 900mm overhead cupboards, 2No. 450mm overhead cupboards, open shelf over refrigerator space. Butler's Pantry includes 1No. 900mm base cupboard, 2No. 450mm base cupboards, additional 514x1210mm fixed window, additional single bowl sink, additional bench top and tiled splashback to suit.



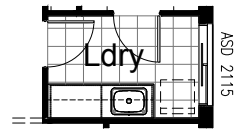
**OPTION K2**

Provide Galley-style Kitchen option including 900mm retractable rangehood, 900mm cooktop, 900mm under bench oven, 450mm drawer unit, dishwasher provision, microwave provision with pot drawer, 4No. 900mm base cupboards, 2No. 450mm base cupboards, 2No. 900mm overhead cupboards, 2No. 450mm overhead cupboards, open shelf over refrigerator space, additional bench top and tiled splashback to suit. Butler's Pantry includes 1No. 900mm base cupboard, 2No. 450mm base cupboards, additional 514x1210mm fixed window, additional single bowl sink, additional bench top and tiled splashback to suit.



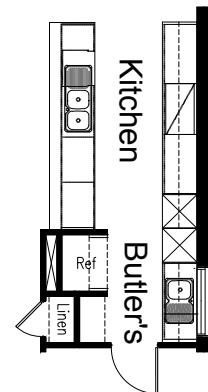
**OPTION LD1**

Provide Laundry upgrade including laminate base cupboards and stainless steel inset trough including 2No. 900mm base cupboards, 2No. 900mm overhead cupboards, additional benchtop and tiled splashback to suit.



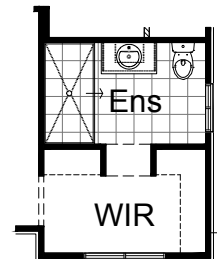
**OPTION K3**

Provide Galley-style Kitchen option including 900mm retractable rangehood, 900mm cooktop, 450mm drawer unit, dishwasher provision, 3No. 900mm base cupboards, 2No. 800mm base cupboards, 2No. 700mm base cupboards, 1No. 450mm base cupboard, 2No. 350mm base cupboards, 1No. 900mm overhead cupboard, 2No. 700mm overhead cupboards, 1No. 450mm overhead cupboard, 2No. 350mm overhead cupboards, 2No. oven towers with microwave space and pot drawers, open shelf over refrigerator space, additional 514x1210mm fixed window, additional bench top and tiled splashback to suit.



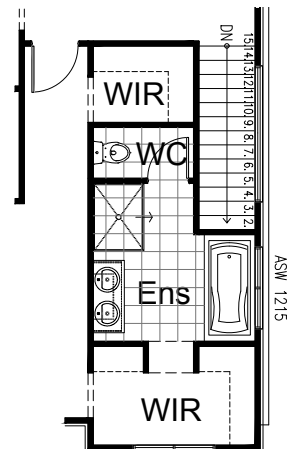
**OPTION ENS1**

Provide Ensuite option to Bedroom 1 including 1800x900 tiled shower base in lieu of standard. Opening to Ensuite also moved to accommodate.



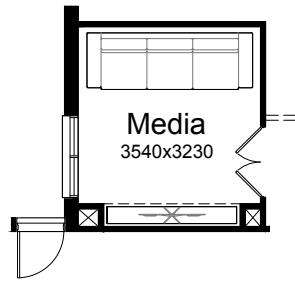
**OPTION ENS2**

Provide Ensuite option to Bedroom 1 including rearranged layout, enclosed WC, 1200x900mm tiled shower base, 1675mm bath with tiled hob and 1282mm vanity with double basins. Provide ASW1215 sliding window in lieu of standard. Opening to Ensuite also moved to accommodate. Option also adds another Walk-in Robe with 450mm shelf and hanging rail. Door to Bed 1 also moves adjacent to Activity.



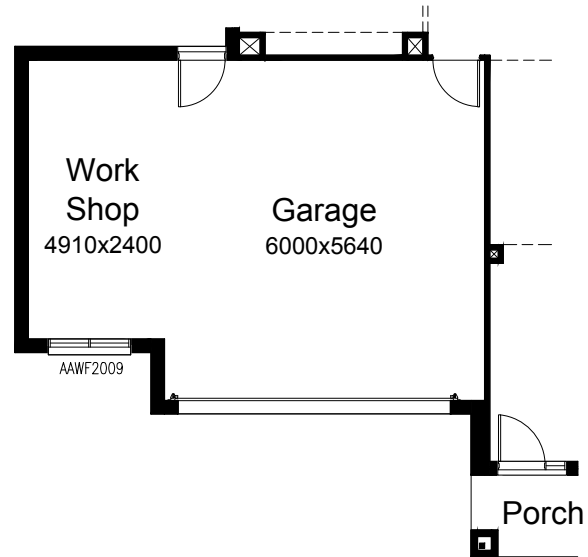
**OPTION IP1**

Provide 2No. 620mm hinged doors to Media room in lieu of bulkhead opening



**OPTION G2**

Provide extension to Garage to create additional Workshop area including additional AAWF2015 awning window. Increases width of the home by 2400mm. Increases area of the home by 12.94m<sup>2</sup>.



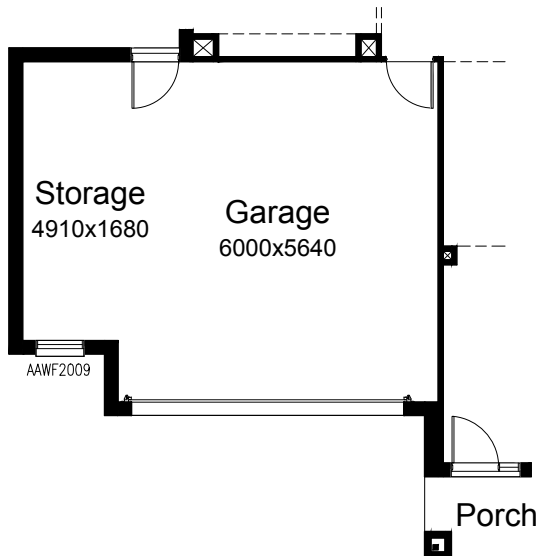
**OPTION IP2**

Provide ACSD 2136-27 corner sliding stacker door to Alfresco in lieu of ASD2127 and ASD2136. Option includes steel lintel and posts to support first floor above.



**OPTION G1**

Provide extension to Garage to create additional Storage area including additional AAWF2009 awning window. Increases width of the home by 1680mm. Increases area of the home by 9.06m<sup>2</sup>.



**OPTION G3**

Provide extension to Garage to create Triple Car Garage including additional 2100x2410 garage door as per colour selection. Increases width of the home by 3600mm. Increases area of the home by 23.81m<sup>2</sup>.

